

Are you getting a Centrelink student payment?



Here's how to avoid a debt



Study full time

Most of the time you need to study full time to get a payment. Full time is 75% or more of your course's full time study load. You might need to work this out using credit points, your hours of study or Equivalent Full Time Study Load (EFTSL). Your uni or TAFE will tell you if it's not clear.



Tell Services Australia if you need to study part time

If you go part time for any reason, you need to let Services Australia know. You may still be eligible for a student payment if you need to study part time for reasons outside your control. For instance:

- a temporary injury or illness
- your uni or TAFE cancels a subject and you can't study something else
- a timetable clash.

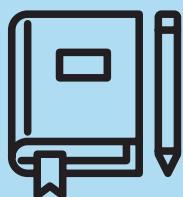
You'll need to provide some documents to support this, like a medical certificate or letter from your uni or TAFE.

If you're in this situation, call the Youth and Students line on **132 490**.



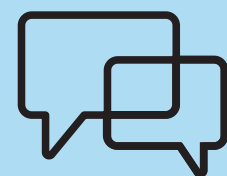
Report what you earn each fortnight to Services Australia

Report your income so you get paid the right amount. If you have a partner, you need to report their earnings as well.



Enrol in all compulsory study periods of the year

If you're studying for a whole year, that means studying in both semesters, all 3 trimesters or all terms.



Tell Services Australia if any of your circumstances change within 14 days

This includes changes to your personal situation. This could be where you live, if you live with a partner, or if you become sick or injured and can't study.

The easiest way to make updates is in your Centrelink online account through myGov or the Express Plus Centrelink mobile app.

